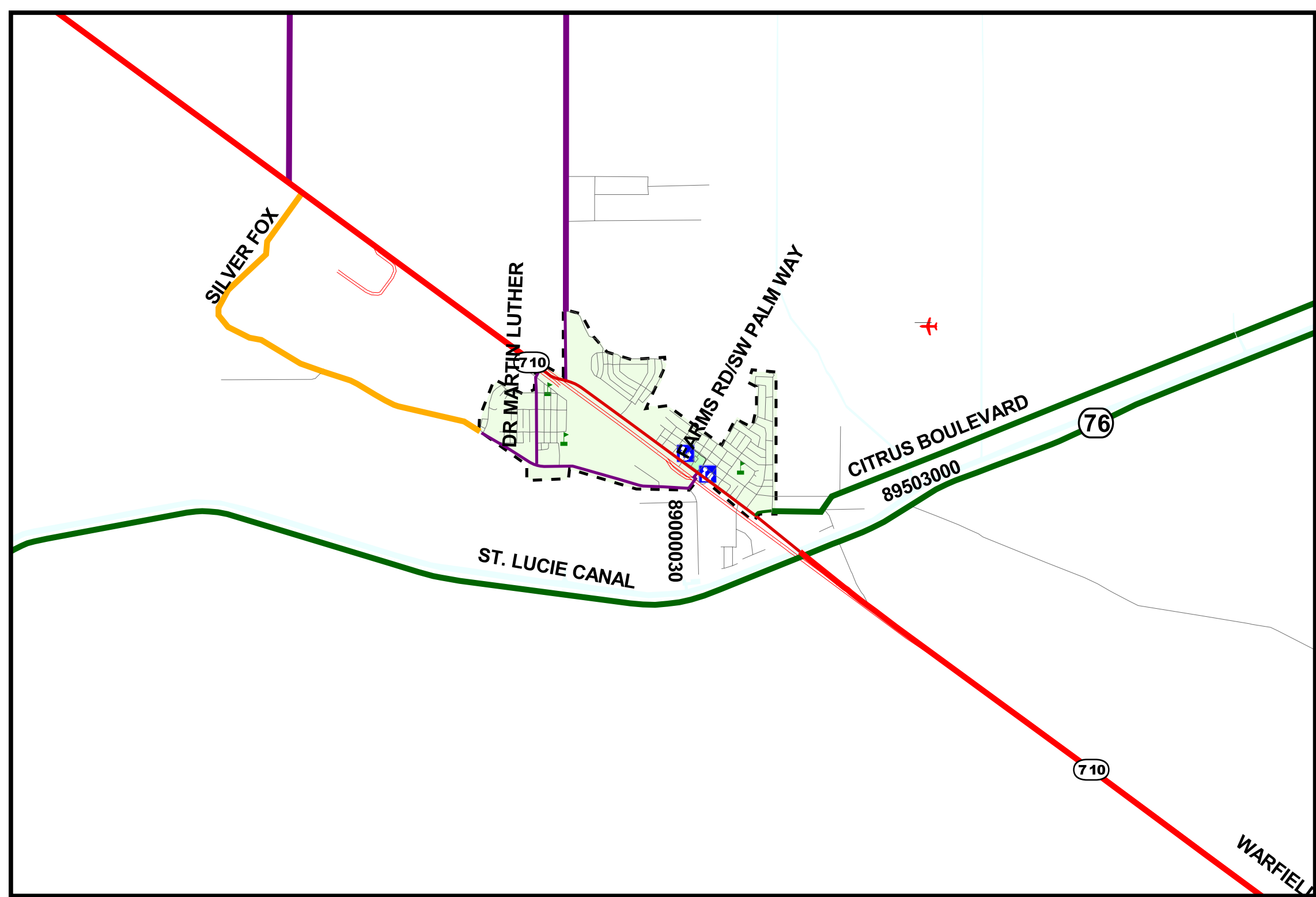




U.S. CENSUS: PORT ST. LUCIE URBANIZED AREA
 MARTIN COUNTY- INDIANTOWN
**2000-2010 FEDERAL FUNCTIONAL CLASSIFICATION
 AND
 URBAN AREA BOUNDARIES**



LEGEND

2000-2010 FUNCTIONAL CLASSIFICATION	
	R - Principal Arterial-Interstate
	R - Principal Arterial-Other
	R - Minor Arterial
	R - Major Collector
	R - Minor Collector
	R - Local
	U - Principal Arterial-Interstate
	U - Principal Arterial-Other Frwy & Expwy
	U - Principal Arterial-Other
	U - Minor Arterial
	U - Collector
	Local Roads
	Shopping Mall
	School
	Library
	Ports
	Hospital
	Colleges
	Rail Roads
	Airports
	Tri-Rail Stations
	2000 FHWA Boundary
	County Boundary

SCALE: 1:50000



Recommended by:		<u>7/29/04</u>
Chmn. Metropolitan Planning Organization		Date
		<u>7/6/04</u>
	Florida Department of Transportation	Date
Approved by:		<u>8/26/04</u>
	Federal Highway Administration	Date

PREPARED BY:
 FLORIDA DEPARTMENT OF TRANSPORTATION
 DISTRICT FOUR
 IN COOPERATION WITH THE
 U.S. DEPARTMENT OF TRANSPORTATION
 FEDERAL HIGHWAY ADMINISTRATION
 MAP 5 OF 5
 REVISION 06/29/2004